

Prime News



[PCM-9575 Product Launch](#)

Advantech is pleased to announce that the PCM-9575, featuring a low power, high performance VIA processor, will be available in February, 2002. Low cost, low power, low noise (both EMI and acoustic), but high performance, and high data

rate, make the PCM-9575 a powerful competitor for older Pentium-based designs. ([read more...](#))

Tel: 886-2-2792-7818

Fax: 886-2-2794-7304

[Contact the editor](#)

Recent News

Marketing Express

■ [Enjoy Surfing the New DTOS and ESS Websites](#)

Prime News

■ [Advantech a Leading Windows CE .NET Solution Provider](#)

Prime News

■ [Advantech Selected Windows Embedded Partner of the Year](#)

Prime News

■ [Advantech x86-based SBC Uses Micron's SyncFlash® Memory for Instant-on Microsoft® Windows CE](#)

RECENT ISSUES

[January 1, 2002](#)

[December 15, 2001](#)

[December 1, 2001](#)

[November 15, 2001](#)

Announcements



[EPC's Build to Order Service](#)

For those cases where a small product quantity is required, Advantech's BTOS is a perfect fit. Maybe a customer needs one sample, or just a few units per month. Instead of investing in costly inventory that sits in storage, they take advantage of Advantech's BTOS service, where 98% of incoming orders are completed within three days. ([read more...](#))

[Windows XP Embedded Service](#)

Continuing to build on its extensive experience with Windows Embedded systems, Advantech now offers Windows XP Embedded to its selection of Windows embedded platforms. ([read more...](#))



Problems, comments, suggestions? Please contact the [editor](#)

[EPC World](#)

[Advantech Home](#)

[EPC Homepage](#)

[News Archive](#)

[Contact Us](#)

Prime News

PCM-9575 Product Launch



Advantech is pleased to announce that the PCM-9575, featuring a low power, high performance VIA processor, will be available in February, 2002.

Low cost and High

Low cost, low power, low noise (both EMI and acoustic), but high performance, and high data rate, make the PCM-9575 a powerful competitor for older Pentium-based designs. This is a new EBX form

factor 5.25" single board computer with an onboard VIA low power Ezra 800 MHz or Eden 400MHz processor. The VIA processor uses advanced 0.13u CMOS technology with 128KB L1 cache memory and 64KB L2 cache memory on die. This board can operate without a fan at temperatures up to 60°C (140°F) (800MHz model requires a small fan) and typically consumes under 14 Watts, even while supporting numerous peripherals. This SBC includes a 4X AGP controller, a PCI audio interface, a PCI Ethernet interface, and 2 channel LVDS interface. Its design is based on the EBX form factor that supports the PC/104-Plus interface for ISA/PCI module upgrades. Other on-board features include a PCI slot, an LPT, 2 USBs, IrDA and 4 serial ports: 3 RS-232 and 1 RS-232/422/485, and optional TV out and additional USB3, USB4 . The SSD solution supports both DiskOnChip® 2000 and CompactFlash™ I/II cards.

This product uses a VIA Twister chip with Integrated Savage4 2D/3D/Video Accelerator, north bridge and LCD controller, and supports 4X AGP VGA/LCD interface and up to 32 MB frame buffer using system memory. The board is effective for use as a mini-server or gateway device, through its ability to add more ethernet ports through its fast PC/104-plus socket or PCI slot. The PCM-9575's powerful processor choices and solid system chipset make it a perfect core technology for multimedia, medical equipment, and other long life applications. And the high quality TV-out option makes numerous other applications available too.

SBC with EBX Form Factor, PC/104-Plus, and VIA processor

With this board and its EBX form factor and PC/104-Plus interface, system engineers can develop their own products or buy them off the shelf. Up to two ATA/100 EIDE devices can be supported as well as two FDDs.

True Multimedia SBC

The PCM-9575 supports 3D audio and complies with the AC97 standard and 3D engine 4X AGP VGA/LCD controller which supports DVD play. The PCM-9575 combines audio, TV-out (optional), and network functions on a single board computer the same size as the EBX form factor standard. Optional TV-out supports NTSC and PAL formats through a composite video connector and an S-Video

Tel: 886-2-2218-4567

Fax: 886-2-2218-3875

[Contact the editor](#)

Other News

Prime News

- [PCM-9575 Launch](#)

Announcement

- [EPC's Build to Order Service](#)

Announcement

- [Windows XP Embedded Service](#)

RECENT ISSUES

- [January 1, 2002](#)
- [December 15, 2001](#)
- [December 1, 2001](#)
- [November 15, 2001](#)

connector via the optional cable kit.

Features

- Embedded low power VIA 800MHz or 400MHz processor
- Applied EBX form factor standard and supports PC/104+ bus
- Fanless operation with 400MHz processor
- 133MHz FSB and 4X AGP graphics for high performance applications
- TV out option

Availability

The PCM-9575 with VIA Ezra 800MHz and VIA Eden 400MHZ processors will be available in February, 2002. An intermediate model, employing a VIA 667MHz processor, will be available soon after.

Contact Information

For more information on this new product or any other SBC products, contact your nearest Advantech representative or e-mail us at epc@advantech.com today.

[TOP](#)

Problems, comments, suggestions? Please contact the [editor](#)

EPC World	Advantech Home	EPC Homepage	News Archive	Contact Us
---------------------------	--------------------------------	------------------------------	------------------------------	----------------------------

Announcement

EPC's Build to Order Service

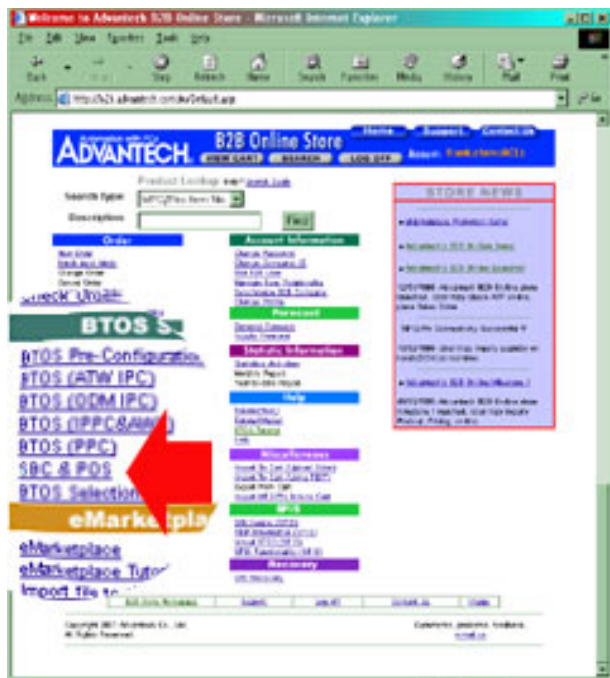
Quick Turn-Around for Qualified Customers

For those cases where a small product quantity is required, Advantech's BTOS is a perfect fit. Maybe a customer needs one engineering sample, or is selling a low volume item and requires just a few units per month. Instead of investing in costly inventory that sits around in storage, they take advantage of Advantech's BTOS service, where 98% of incoming orders are completed within three days.



Efficient Online Project Initiation

To start a project, a customer logs in at <http://b2b.advantech.com.tw/Login/login.asp> then fills in the particulars for the project. Single Board PC with processor, plus appropriate selection of chassis, memory, HDD, FDD, SSD, CompactFlash, are all available online, at the click of a mouse. One of the great time savers of this system is the that the system helps the customer navigate the way to a logical, working system.



Previously, incompatible components were occasionally (not to say often) specified, then some effort was required to straighten out the errors. Now, as the customer makes selections, subsequent menus are automatically limited to those components that are compatible with his previous choices. So as he goes, he builds a workable system. When the order is completed and submitted, it goes directly to the factory for completion.

If the customer is just checking, and not ready to order immediately, any project configuration may be saved to a name specified by the customer, and retrieved at a later date. Similarly, project price quotes

may also be saved and retrieved. Special delivery requests, such as two-day rush

Tel: 886-2-2218-4567
Fax: 886-2-2218-3875
[Contact the editor](#)

Other News

Prime News

- [PCM-9575 Launch](#)

Announcement

- [EPC's Build to Order Service](#)

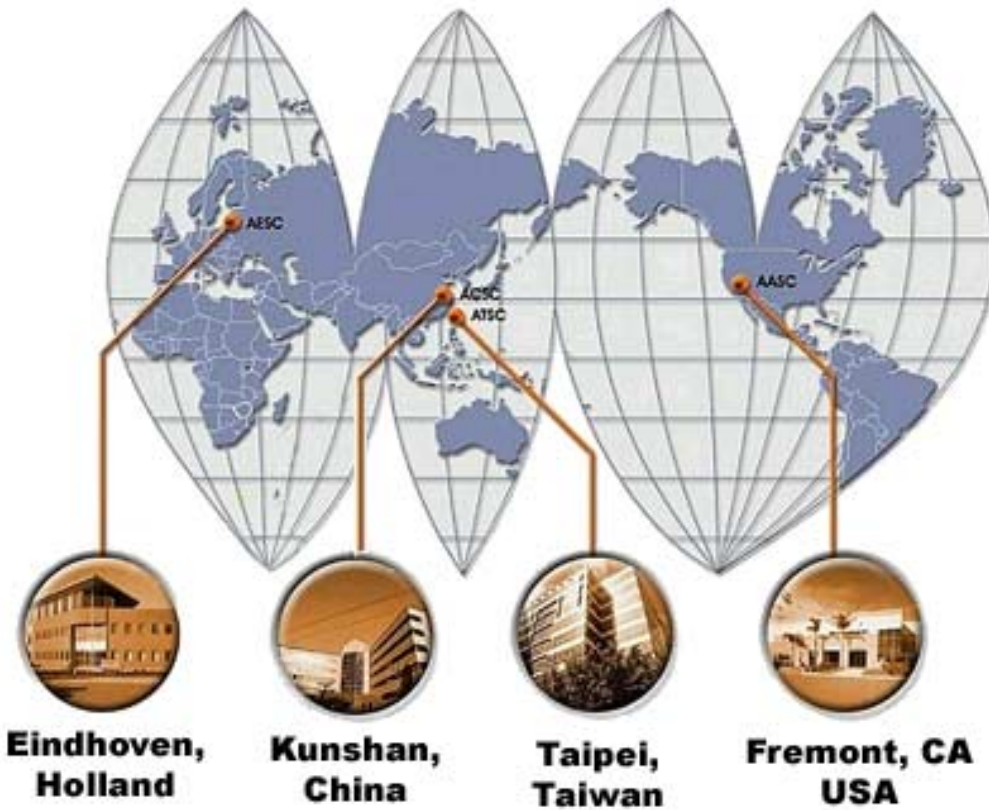
Announcement

- [Windows XP Embedded Service](#)

RECENT ISSUES

- [January 1, 2002](#)
- [December 15, 2001](#)
- [December 1, 2001](#)
- [November 15, 2001](#)

delivery (subject to geographical limitations), or delivery on a specific day, may be entered in the "notes" section.



Worldwide Service

Wherever you are in the world, you can take advantage of Advantech's Build to Order Service. Four logistic centers worldwide—Fremont, California; Eindhoven, Holland; Kunshan, China; and Taipei, Taiwan—make sure that no matter where you are, BTOS is not far away.

[TOP](#)

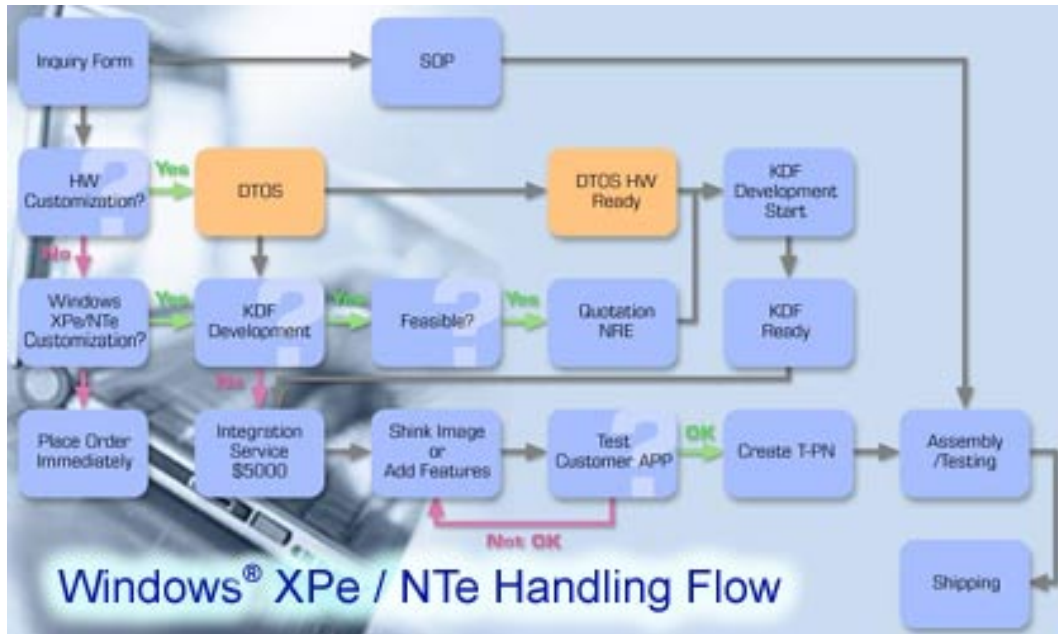
Problems, comments, suggestions? Please contact the [editor](#)

EPC World	Advantech Home	EPC Homepage	News Archive	Contact Us
---------------------------	--------------------------------	------------------------------	------------------------------	----------------------------

Announcement

Advantech Starts Windows XP Embedded Service

Advantech has provided Windows Embedded solutions utilizing Windows CE and Windows NT for some time now, and recently added Windows CE .NET capabilities. On November 27th, 2001, Microsoft selected Advantech as Windows Embedded Partner of the Year for 2001 in the Independent Hardware Vendor category. Continuing to build on its extensive experience with Windows Embedded systems, Advantech now offers Windows XP Embedded to its selection of Windows embedded platforms.



One basic difference between Windows CE and Windows NT Embedded is that while a Windows CE image represents a small total system, a Windows NTE image is a stripped system with unnecessary components removed. Windows XP Embedded is similar to Windows NTE in that it represents a system relieved of unneeded components. A further distinction of Windows XP is that whereas Windows NTE required a Component Definition File (KDF) for each component supported, Windows XP does not. This simplifies the integration options.

Because of its deep understanding of Windows Embedded systems, Advantech can help each customer tailor the most efficient, most reliable OS image exactly suited to his application. One example of Advantech's expertise was on display at DevCon 2001 in Las Vegas in November, 2001. It featured an oscilloscope demo running on a Windows XP Embedded OS on an Advantech Panel PC PPC-153T with a mere 16MB of storage.

Easy Upgrade

Up to now, roughly 80% of SBCs have been running legacy Windows operating

Tel: 886-2-2218-4567

Fax: 886-2-2218-3875

[Contact the editor](#)

Other News

Prime News

- [PCM-9575 Launch](#)

Announcement

- [EPC's Build to Order Service](#)

Announcement

- [Windows XP Embedded Service](#)

RECENT ISSUES

[January 1, 2002](#)

[December 15, 2001](#)

[December 1, 2001](#)

[November 15, 2001](#)

systems, including Windows 95, Windows 98, Windows NT, Windows 2000, and Windows XP. And previously there has been a high threshold in terms of engineering costs facing integrators who wanted to migrate their systems to more reliable embedded systems. But with Advantech's Windows XP Embedded integration service, migrating to a stable Windows XP Embedded OS, storage, is more affordable than ever, even when adding super-reliable SSD.

Applications

Windows XP Embedded features include multimedia, wireless, security, UI, communications, plus scalability and performance. This embedded OS provides over 10,000 individual features, services, and drivers to select from. New device driver support for Windows XP Embedded includes USB, IEEE 1394, AGP, PnP, and UDF 2.01 (DVD Standard). Windows XP Embedded is ideally suited for a number of applications, including all levels of set top boxes (including digital), home gateways, kiosks and gaming consoles, network attached storage, retail Point Of Sale terminals, and information appliances (POI).

One Stop Shopping

No longer must customers shell out for an SBC, shell out again for OS licensing, and shell out yet again for software system integration. In order to increase efficiency and reduce the total cost of ownership, Advantech offers free Windows XP Embedded integration service to qualified customers. With purchase of a sufficient quantity of complete systems, including Windows XP Embedded licensing, Advantech will underwrite the development of a customized Windows XP image. As a Microsoft EAPG direct customer, Advantech can provide OS - system combinations at very competitive prices.

Find Out More

To find out how Advantech can put Windows XP Embedded to work for you, contact: epc@advantech.com

[TOP](#)

Problems, comments, suggestions? Please contact the [editor](#)

EPC World	Advantech Home	EPC Homepage	News Archive	Contact Us
---------------------------	--------------------------------	------------------------------	------------------------------	----------------------------