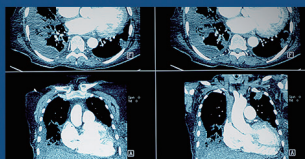




MIT-W101



Search



Share



Start

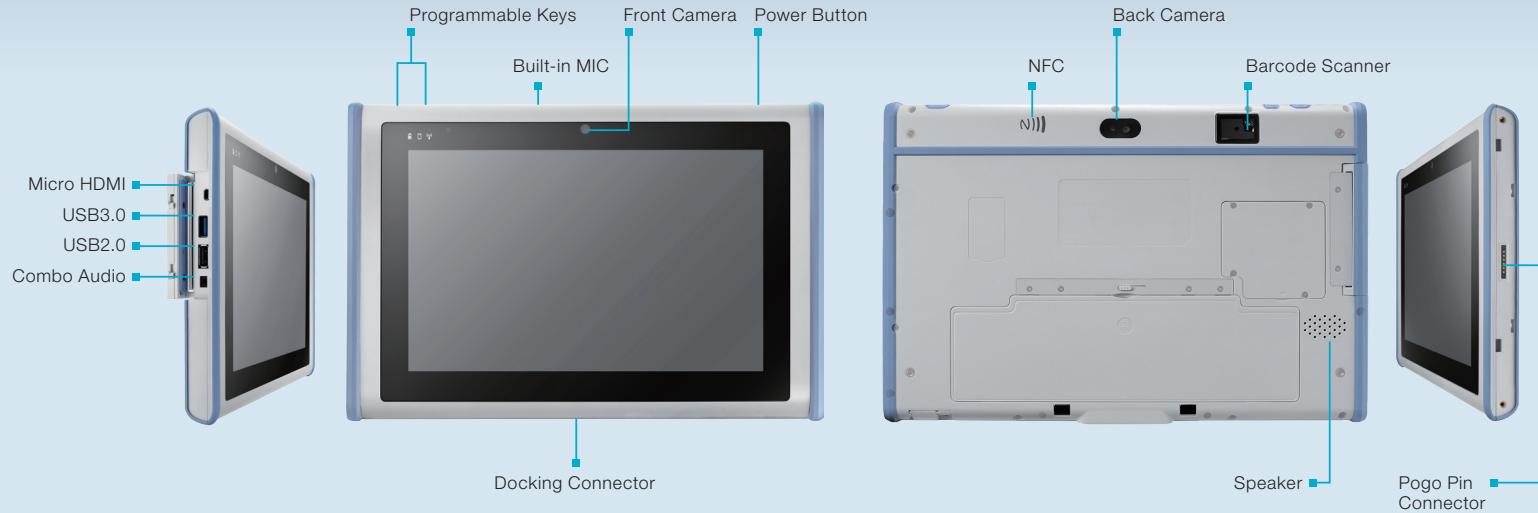


Devices



Settings

The MIT-W101 is a brand new, industrial-grade tablet PC with stylish appearance and advanced technology. It features the latest Intel® SoC Celeron® processor, which delivers performance and power efficiency. The 10.1" WXGA 16:9 LCD panel provides the best visual experience. Weighing in at a light 1.1 kg (2.4 lb), and a slim 20 mm (0.79 in), the MIT-M101 helps enhance work efficiency with the least possible loading.



Beyond a Digital Documentation Tool

The MIT-W101 makes clinical communications and accurate diagnoses possible by capturing real-time information for medical professionals. It also assists in decision making and enhances worker productivity by coordinating across the care continuum. In this way, the MIT-W101 substantially helps elevate the overall quality of patient care in the healthcare environment.



Certified Medical Quality

Built for safe operation at the medical level, the MIT-W101 meets EN/IEC 60601-1 regulations.



Durable, Reliable Design

IP65 compliant enclosure tolerates repeated sanitization and provides better infection control. Ruggedized structure withstands 4-foot drop, even 6-foot drop with extended bumpers.



Windows-Based Platform

The MIT-W101 supports Windows OS, reducing complexity and enabling quick integration to existing Windows IT infrastructure.



Purpose-Built Solution

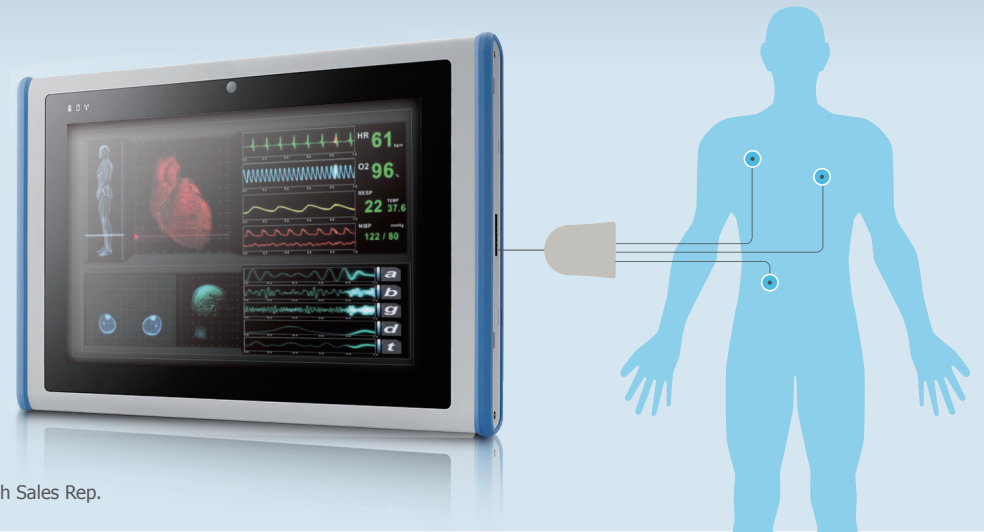
The MIT-W101 integrates front and rear cameras and a barcode scanner for data acquisition; it accepts both touch and pen input; Wi-Fi and Bluetooth keep healthcare workforces connected.

Versatile. Transforms to Fit the Circumstances

With a slew of diverse accessories, the MIT-W101 can expand its role to every corner of the healthcare environment, keeping data flow smooth and accurate.

Customizable Expansion Modules*

Linking to medical devices via pogo pin, the MIT-W101 can transform to a powerful extension control panel. EN/IEC 60601-1 certified MIT-W101 functions at medical level safety together with other medical devices.



* For customization services, please contact Advantech Sales Rep.

Docking Station

with additional I/O ports expands functionality for easy fixed usage.



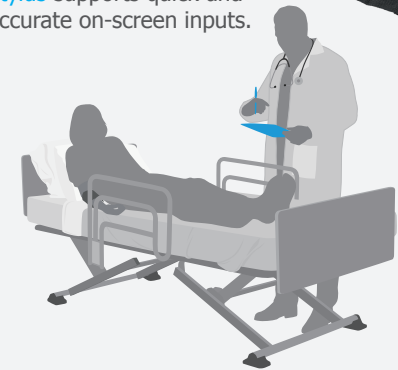
VESA Dock

makes attachment to medical cart or bedside stand one quick movement.



Shoulder Strap

makes for easy portability, even when carried throughout the day. Stylus supports quick and accurate on-screen inputs.



More Offerings



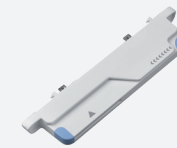
Rugged Bumper



X-Type Hand Strap



Multi-function Cover
(VESA Dock + Kick Stand
+ Hand Strap)



Expansion Module
(MSR + Smart Card Reader)



Extended Battery

MIT-W101 Specifications

CPU	Intel® Celeron® Processor N2930, Quad Core 1.83GB
Memory	DDR3L 1066MHz SODIMM (Default 4GB / Up to 8GB)
Operating System	Microsoft Windows Embedded 8 (Default), Microsoft Windows Embedded 7 (Optional)
Storage	1 x mSATA SSD (Default 64GB / support up to 128GB)
Display	10.1" TFT LCD Panel, 1280 x 800 & 10-point P-Cap Multi-Touch with Enhanced Glass
Communication	WiFi, IEEE 802.11a/b/g/n
	Bluetooth v4.0 CLASS II
	NFC Read/Write Device Compatible With ISO15693, ISO14443A, ISO14443B, Felica
Audio	Internal speaker x1, Internal Mono Microphone x1
I/O Port Interfaces	Combo Audio x1(audio out and microphone in), USB 3.0 x1, USB 2.0 x1, Micro HDMI x1, DC Jack x1, Expansion Port x1, Docking Port x1
Camera	2.0M Fixed Focus Camera At Front, 5.0M Auto Focus Camera With LED Flash At Rear
Barcode Scanner	1D / 2D Barcode Scanner (Optional)
Expansion Module	MSR + Smart Card Reader (Optional)
Control Buttons	Power Button, Programmable Button x2
System Indicators	Power / Battery Status x1, HDD x1, Wireless / BT x1
Power	AC Adapter In 100 – 240V ~ 1.5A 50/60Hz
	AC Adapter Out 18V, 3.5A Max, 63W
	Battery Capacity Main Battery: 31.7Whrs (11.1V 2860mAh)
Water/Dust Resistance	IP65
Temperature	Operating: -10°C ~ 50°C / 14°F ~ 122°F (0°C ~ 35°C for medical cert.), Storage: -30°C ~ 70°C / -22°F ~ 158°F
Shock Resistance	Operating: 20G, 11ms, Non-operating: 40G, 11ms
Drop Test	4ft drop onto steel plate, 4ft drop onto 2in plywood over concrete (MIL-STD 810G compliant), 6ft drop with add-on bumper
Dimension	(W x H x D) 292 x 196 x 20 mm/ 11.5 x 7.7 x 0.79 in
Weight	1.1 kg/ 2.4 lb (Base Configuration)
Regulatory Approvals	FCC Class B, CE, CB, IEC/ EN 60601-1

ADVANTECH
www.advantech.com

Please verify specifications before ordering. This guide is intended for reference purposes only. All product specifications are subject to change without notice. No part of this publication may be reproduced in any form or by any means, electronic, photocopying, recording or otherwise, without prior written permission of the publisher. All brand and product names are trademarks or registered trademarks of their respective companies. © Advantech Co., Ltd. 2015



8600000222